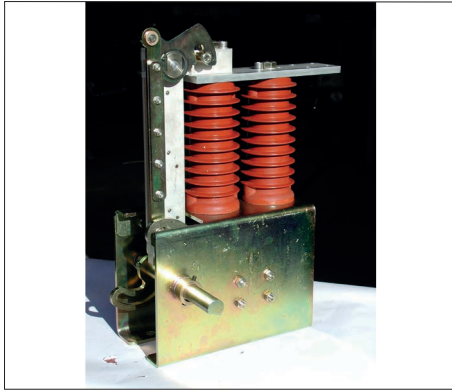


## Indoor earthing switch

### TYPE STAS 90

Ur : 24 / 25,8 kV - BIL 125 à 150 kV

Ik : 160 kA - tk : 1s - Ip : 463 kA



### Applications

- For power plant.
- Stand alone or combined earthing switch.

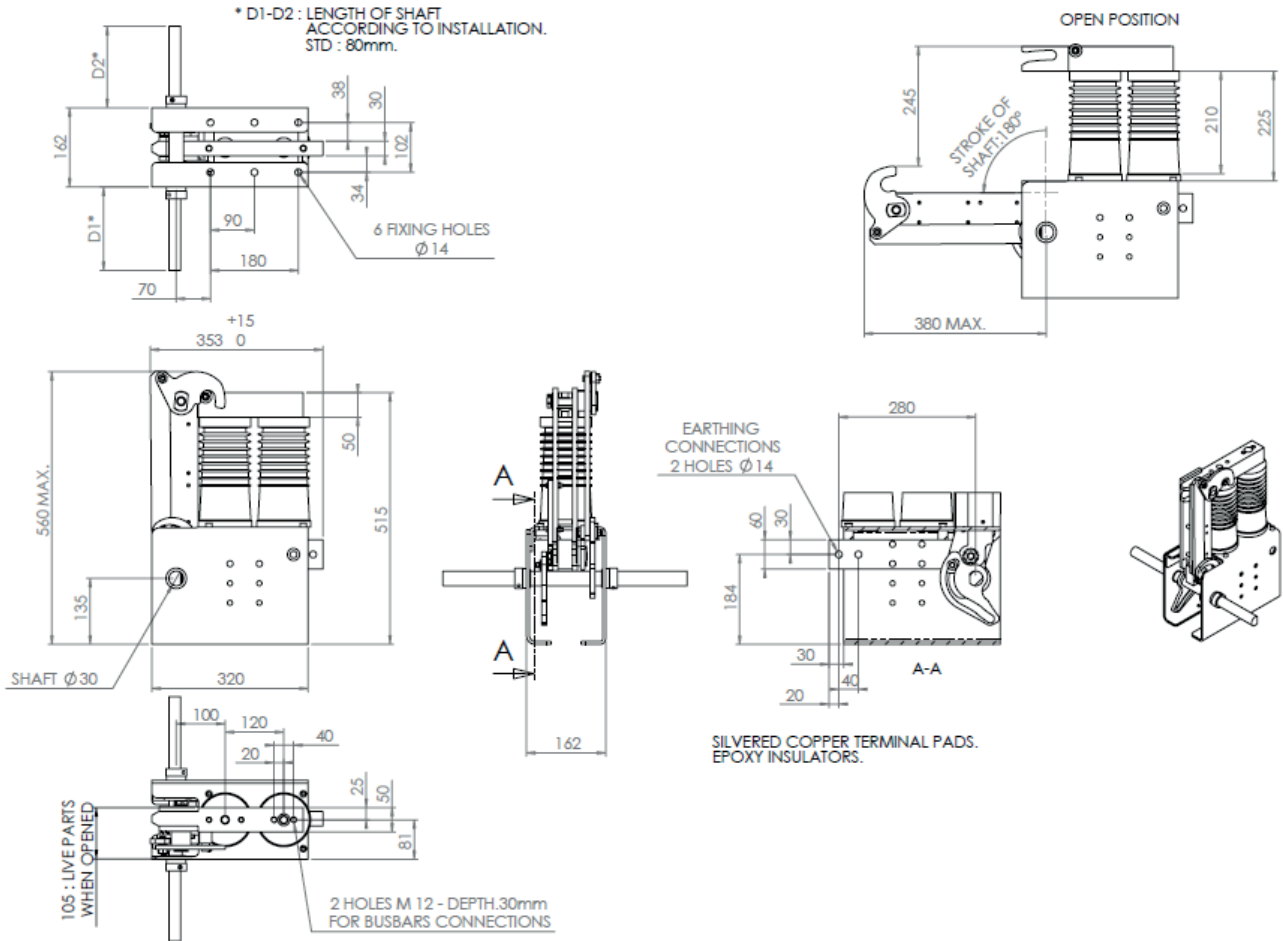
### Technical datas

- |   |  |
|---|--|
| ■ Dielectric withstand at 50/60 Hz for 1 minute (kV rms)                  |  |
| • to earth  | 24 kV : 50 kV - 25,8 kV : 70 kV                                |
| ■ Dielectric withstand rated lightning impulse withstand (1,2/50 $\mu$ s) |  |
| • to earth  | 24 kV : 125 kV - 25,8 kV : 150 kV                              |
| ■ Epoxy resin insulator   |  |
| • minimum creepage distance   | 24 kV : 330 mm - 25,8 kV : 350 mm (higher values upon request) |
| ■ Primary Terminals   | Silver plated copper pads                                      |
| ■ Seismic withstand   | 0,2 g (higher values upon request)                             |
| ■ Mechanical endurance  | 10 000 cycles  |
| ■ Small current breaking capacity   | 0,5 A (higher values upon request)                             |
| ■ Weight per pole   | 35 kg  |

### Options

- Interlocking device with other functions
- Earthing switch drives
  - manual (MOM) or electrical (EOM)
  - single pole operated or group operated

## Outline drawing (Rated voltage: 24 kV)



The drawing above is given for information only. Detailed layout available upon request..

### General features

- IEC standards compliant
- Type tests reports available upon request