



FLEXIBLE TRANSMISSION FOR MV & HV SWITCHES



Tunnel Solution

MAIN FEATURES

- Ideal for railways tunnel installation: flexible transmission system perfectly suits tunnel wall and complex installations, allowing safe circulation of rolling stock.
- SDCEM is the world reference of switches with flexible transmission since 1990 (more than 12 millions hours without any failure).
- It can be spatially laid on all the three dimensions (up to 180° in one loop).
- It can operate in severe environmental conditions such as moisture, condensation or icing, without impact on performance.
- Temperature variations have no effect on flexible transmission.

CUSTOMER BENEFITS

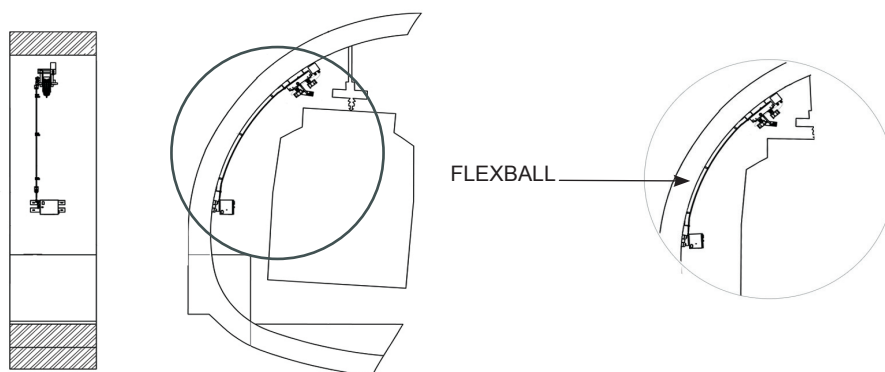
- Robust and reliable: stainless steel components.
- Easy installation: ideal for tunnels or complex HV switch metallic structure (mast, portals).
- High mechanical efficiency .
- Maintenance free: no maintenance or lubrication is necessary.

TECHNICAL FEATURES

COMMUNICATION

| | |
|-------------------------------|-----------------|
| Mechanical efficiency | up to 97% |
| Temperature range | -50°C to +120°C |
| Minimum bending radius | 200mm / 250mm |
| Push load | up to 2 500 N |
| Pull load | up to 15 000 N |

OUTLINE DRAWINGS



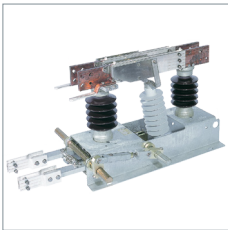
Example of installation Flexball Tunnel Solution

PRODUCT ON SITE



Flexball on sao Paulo Metro L5

RELATED EQUIPMENT



SBE
VERTICAL BREAK
DISCONNECTOR



MR41E
UNIVERSAL SMART
DRIVE



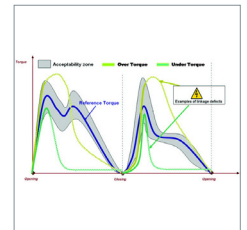
MR164E
UNIVERSAL SMART
DRIVE



S-COM
REMOTE CONTROL
BOARD



S-VOLT
VOLTAGE DETECTOR



S-TORQUE
MECHANICAL FAILURE
AND POSITION
DETECTION